

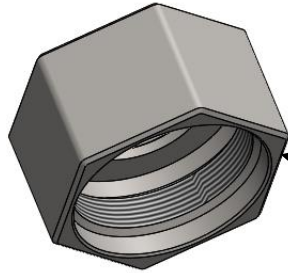


Technical specification

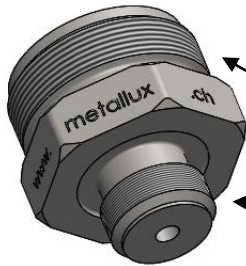
DQ 3.2.1
All. 7 del 26.02.10
Pag. 1 di 1



5 x COS0585
FKM DKAR 00014 V9004
12.42 x 1.68 mm



1 x DMX0007
Stainless steel
Retaining screw
M27



1 x DMX0065
Stainless steel
Sensor housing
M24
1/4" Gas



Operating recommendations:

Respect the tight torque value, depending on the pressure range. (see table below)

Run a mechanical stabilization cycle giving five times pressure up to 1,2 times nominal range.

| Pressure [bar] | Pressure [psi] | Closing torque [Nm] | Closing torque [lb-in.] |
|--------------------|------------------|---------------------|-------------------------|
| ≥0.5 ... ≤5.0 | >7 ... ≤72 | 0.9 | 7.96 |
| >5.0 ... ≤20.0 | >72 ... ≤290 | 1.1 | 9.73 |
| >20.0 ... ≤100.0 | >290 ... ≤1450 | 1.6 | 14.16 |
| >100.0 ... ≤600.0 | >1450 ... ≤8700 | 1.8 | 15.93 |
| >600.0 ... ≤1000.0 | >8700 ... ≤14500 | 2.1 | 18.58 |

Related document:

Pressure sensors Mounting Proposal (3D_MEM75X-MEM77X.pdf).

| Pagina | Toll. Generale | Materiale | Scala | D | 16.03.2015 | RDM 15069 |
|--|----------------|-----------|-------|------------------|------------|--------------------|
| 1 di 1 | - | - | - | C | 23.12.2013 | Updated |
| | | | | B | 03.05.'13 | (RDM13-127) |
| | | | | A | 07.09.10 | Release |
| Sensor Housing + Kantseal | | | | Ind. | Data | Nota |
| | | | | | | |
| Beginner's kit for ME501/504/505/662/663/651/ 667/670/75x/77x/78x/79x | | | | Elaborato | P.Satta | Data 16.03.2015 |
| | | | | Controllato | A.Greppi | Data 16.03.2015 |
| | | | | Codice Metallux: | | |
| | | | | KIT0400 | | |