

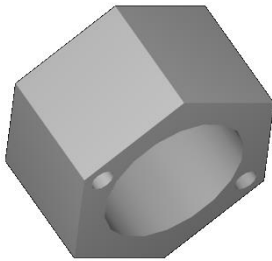


Technical specification

DQ 3.2.1
All. 7 del 26.02.10
Pag. 1 di 1



5 x COS0585
FKM DKAR 00014 V9004
12.42 x 1.68 mm



1 x DMX0007
Stainless steel
Retaining screw



1 x DMX0065
Stainless steel
Sensor housing



Operating recommendations:

Respect the tight torque value, depending on the pressure range.
Run a mechanical stabilization cycle giving twice pressure up to 1,2 times nominal range.

Pressure [bar]	Tight torque [Nm]
0,500 to 5	0,9
5,001 to 20	1,1
20,001 to 100	1,6
100,001 to 600	1,8

Related document:

Pressure sensors Mounting Proposal (3D_MEM75X-MEM77X.pdf).

Pagina Seite	Toll. Generale Allgem.	Materiale Mat.	Scala Mass.			
1 di 1	-	-	-	B	03.05.'13	(RDM13-127)
Sensor Housing + Kantseal				A	07.09.10	Release
				Ind. Zust	Data Datum	Nota Bemerkung
Beginner's kit for ME501/505/662/651/75x/77x/780				Elaborato/bearb. Pietro Satta		Data/Datum 03.05.2013
				Rilasciato/freigabe M.Croci		Data/Datum 03.05.2013
				Codice Metallux:		
				KIT0400		

The copyright for these drawings and all enclosures personally entrusted to the consignee remains at our company. They are not to be copied, reproduced, shown to third parties and no access can be given to third parties without our approval in writing - METALLUX SA.CH MENDRISIO